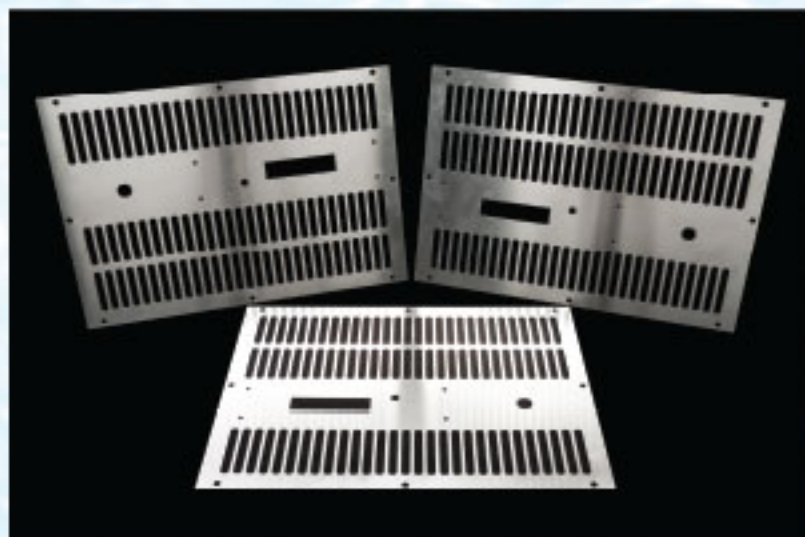
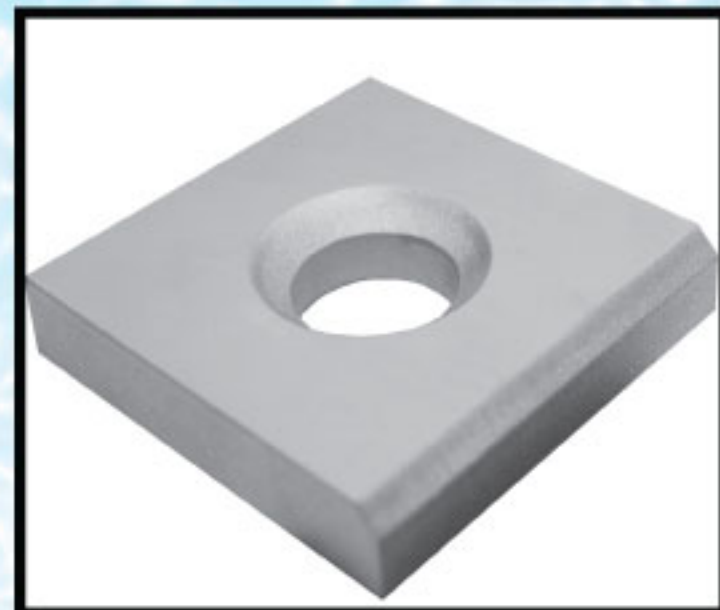


SOUTHWEST WATERJET AND LASER

**5 Minutes Could Save
You 50% or More!**

*We Can Normally Laser Cut Your Parts
For Half the Cost Of Other Operations!*



**Vacuum Suction Lift Used
For Aluminum/Stainless Steel
(Scratch Free)**

Cutting Capabilities

<p>Laser Cutting:</p> <ul style="list-style-type: none"> • Cutting Envelope: 60" x 120" • Material Thickness Capabilities: <ul style="list-style-type: none"> - Carbon Steel: 5/8" thick - Stainless Steel: 1/4" thick - Aluminum: 3/16" thick 	<p>Waterjet cutting:</p> <ul style="list-style-type: none"> • Cutting Envelope: 80" x 160" • Material Thickness Capabilities: <ul style="list-style-type: none"> - Carbon Steel: 8" thick - Stainless Steel: 8" thick - Aluminum: 8" thick
<p>Laser Tube Cutting:</p> <p>Maximum Tube Size:</p> <ul style="list-style-type: none"> - Carbon Steel 4" x 4" x 120" length (.25" wall) - Aluminum 3" x 3" x 120" length (.125" wall) - Stainless Steel 3" x 3" x 120" length (.125" wall) 	<p>Material Handling:</p> <ul style="list-style-type: none"> - Vacuum Suction Lift used on Aluminum & Stainless - 8,000 lb. and 3,500 lb. Forklifts - Overhead Vacuum Crane for laser material handling - ISO Compliant Material Handling Procedures Used

Material Process Capabilities

Carbon Steel Stainless Steel Aluminum Armor Plate	Brass Copper Titanium Tungsten	Acrylics Ceramics Fiberglass Kevlar	G10 Composite Plastics PVC Carbon Fiber	Rubber Vinyl Glass Ceramic Tile	Granite Marble Tube And Much More...
--	---	--	--	--	---

Our Equipment

<p>Trumpf TruLaser 3030</p> <ul style="list-style-type: none"> • 5' x 10' Cutting Envelope • 4KW CO2 Laser • Automated continuous cutting. • Material Vacuum Lift 	<p>Omax 80x Waterjet</p> <ul style="list-style-type: none"> • 5-Axis Cutting! • Up to 60 degree cut • 13' x 6' Bed Size • A-Jet Technology • Tolerances: +/- 0.005" 	<p>Omax 80160 Waterjet</p> <ul style="list-style-type: none"> • 13' x 6' Bed Size • Tilt-A-Jet Technology • Minimal Taper • Tolerances: +/- 0.005" 	<p>OMAX 55100 Waterjet</p> <ul style="list-style-type: none"> • 4' x 8' Bed Size • CNC Drill Head • Designed for rapid cutting of plastics and composites. 	<p>OMAX 5555 Waterjet</p> <ul style="list-style-type: none"> • 4' x 4' Bed Size • Tilt-A-Jet Technology • Minimal Taper! • Tolerances: +/- 0.005"
--	---	---	--	--

Why Choose Southwest Waterjet and Laser?

<ul style="list-style-type: none"> - We Cut It All- With Precision! - Quotes Typically Provided in 4 - 24 hours - We Can Typically Meet or Beat Anyone's Written Quote! - Guaranteed To Meet Tolerance Specifications - De-burring, Tumbling, Graining Services Available - Complete Fabrication Available - We Ship Throughout The U.S., Mexico, and Canada 	<ul style="list-style-type: none"> - With 2 Shifts Cutting 5 Days A Week, Typical Turnaround Is 1-3 Days! - 24/7 Shift Coverage Available For Larger Jobs - Over 400 Cutting Hours Per Week- We Can Handle Any Job, Big or Small - Request A Quote: We Could Save You 50% on Laser Cutting vs. Other Operations - ISO Certification in Progress - Cage Code: 4Y6Z8, Duns #: 808355734, NAICS Code: 332710 - Material Sales: Full, 1/2 or 1/4 sheet... We can provide it!
---	---

Contact Us Today For Your Laser or Waterjet Quote!

4221 E. Raymond Street Suite #103 Phoenix, Arizona 85040

Office: 480.306.7748 Fax: 480.306.7769

Email: Info@swwj-laser.com

www.swwj-laser.com



facebook.com/swwj.laser